

Novated Lease Third Party Authorisation



1 My details

Full name	<input type="text"/>		
Employer	<input type="text"/>		
Oly ID	<input type="text"/>	Date of birth	<input type="text"/>
Payroll number	<input type="text"/>	Contact number	<input type="text"/>
Email	<input type="text"/>		
Address	<input type="text"/>		

Important information

Oly takes the utmost care to ensure that all information provided by you remains private and confidential at all times.

You can authorise other individuals (e.g. your financial adviser) to obtain information directly from Oly on your behalf, with respect to your novated leasing arrangements.

To maintain confidentiality on your account, we require you to complete the details below authorising us to disclose novated leasing information to an authorised third party.

2 Details of authorised person

Full name	<input type="text"/>	<input type="checkbox"/>	All staff*		
Organisation/Relationship	<input type="text"/>				
Address	<input type="text"/>				
Suburb	<input type="text"/>	State	<input type="text"/>	Postcode	<input type="text"/>
Mobile	<input type="text"/>	Home	<input type="text"/>	Work	<input type="text"/>
Email**	<input type="text"/>				

*Please tick this option if you would like all staff at your financial organisation to be able to contact us, otherwise only the nominated person will be able to contact us on your behalf.

**Only the registered email address can be used when contacting us.

3 Employee declaration

I authorise the person named in this authority to obtain information with respect to my novated leasing arrangements from Oly until further notice.

The nominated password for my authorised third party to use is*

*Nominating a password is optional, however if a password is provided, your authorised third party will need to confirm your password when contacting us.

I understand that I am required to make any changes to this authorisation in writing. I also understand that I must advise of any adjustments to my novated leasing deductions in writing and that this authority does not allow my nominated third party to make any changes to my novated leasing account without my written approval.

Name

Signature Date

Witness Name***

Signature Date

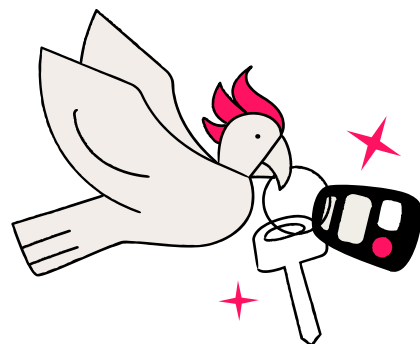
***A witness must be 18 years or older, know you personally and not be a party to this document.

4 How to submit this form

Please submit this completed form along with your supporting documents by:



Email: hello@oly.com.au



Oly Pty Ltd | ABN 69 674 252 629 Oly acts as an authorised representative on behalf of a number of Australian financial services licensees. The capacity in which Oly acts and the financial services Oly are authorised to provide are set out in the Financial Services Guides available at www.oly.com.au/novated-lease/insurance#fsgs. We act as an agent for those licensees and not for you.

The availability of novated leasing is subject to your employer's approval.

DISCLAIMER

Oly provides administration and referral services on behalf of employers. Conditions and fees apply, and you should confirm that they are acceptable before you accept any arrangements with Oly along with credit assessment criteria for lease products. It does not provide any form of financial, taxation or financial product advice to employees on the relative merits of novated leasing programs or on any other basis. You should seek your own independent professional financial and taxation advice on how novated leasing programs may impact your particular financial, taxation and welfare benefit circumstances. Oly may pay and/or receive commissions and/or rebates in connection with some services it provides or arranges to be provided by third parties. By utilising Oly services, you acknowledge the payment and/or receipt of such commissions and rebates by Oly. Tax laws regarding the treatment of novated leasing may change, which could impact your financial, taxation or welfare benefit decisions.

PRIVACY STATEMENT

Oly Pty Ltd 69 674 252 629 (Oly) is part of the McMillan Shakespeare Limited Group (MMS Group) and is collecting your information for the purposes of processing your claim. We may be unable to process your claim if you do not provide us with the information that we request. We also use the personal information we hold about you for such other purposes that are made known to you at the time we collected your personal information, including for direct marketing and online targeted advertising. Your personal information may be disclosed to other entities in the MMS Group, our agents, contractors and service providers (including our web and IT administrators, mail houses, advertising service providers and advisers), some of whom may be located overseas (including The United States of America, the Republic of Ireland, India, China, Sri Lanka and the Philippines). The Oly Privacy Policy contains important information about how we collect, hold, use and disclose personal information, the security of your personal information, how you may access and correct your personal information, and how you can make a privacy complaint and how we will deal with such complaint. If you do not wish to receive promotional material from us, or would like a copy of our Privacy Policy, please contact us on 1300 328 186 or email us at privacy@oly.com.au. To view Oly's Privacy Policy (which is the MMS Group's Privacy Policy) please visit mmsg.com.au/privacy.

TERMS AND CONDITIONS

Important please read before signing this form. By submitting this form, you acknowledge and agree:

1. Oly may charge a fee for the processing of this form. You may obtain details of the applicable fees by contacting Oly.
2. If you do not fully complete this form including providing appropriate supporting documentation, then Oly may contact you to request additional information/documentation and you consent to Oly contacting you for this purpose.

